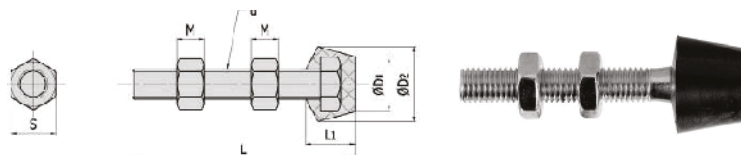


## CH-FC

Perno filettato con puntale in neoprene e due dadi

*(Neoprene tipped zinc plated spindles with two nuts)*

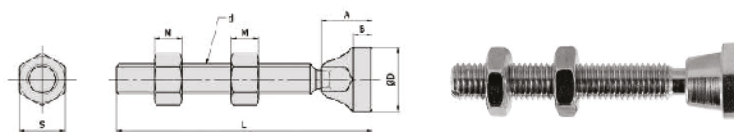


ARTICOLO	L	L1	M	d	D1	D2	S
<b>Filettatura metrica</b> (metric thread)							
CH-FC-042507	25	11.5	3.2	M4 - P0.70	10.5	13.5	7
CH-FC-044207	42	11.5	3.2	M4 - P0.70	10.5	13.5	7
CH-FC-064410	44	14	5.2	M6 - P1.00	10	15	10
CH-FC-065110	51	14	5.2	M6 - P1.00	10	15	10
CH-FC-086312	63	19	6.8	M8 - P1.25	13	18.5	13
CH-FC-087512	75	19	6.8	M8 - P1.25	13	18.5	13
CH-FC-108515	85	24.5	8.4	M10 - P1.50	15	23	16
<b>Filettatura UNC</b> (unc thread)							
CH-FC-38312	89	24.5	5.3	3/8"-16	15	23	14
CH-FC-38412	114	24.5	5.3	3/8"-16	15	23	14
CH-FC-38334	95	24.5	5.3	3/8"-16	15	23	14
CH-FC-14134	45	14	3.8	1/4"-20	10	15	10.8
CH-FC-14218	54	14	3.8	1/4"-20	10	15	10.8
CH-FC-56212	63	19	5	5/16"-18	13	18.5	12.8
CH-FC-56300	3	19	5	5/16"-18	13	18.5	12.8
CH-FC-10138	35	11.5	3.1	3/16"-24	10.5	13.5	7.8

## CH-SF

Perno filettato autolivellante con due dadi

*(Swivel foot spindle with two nuts)*

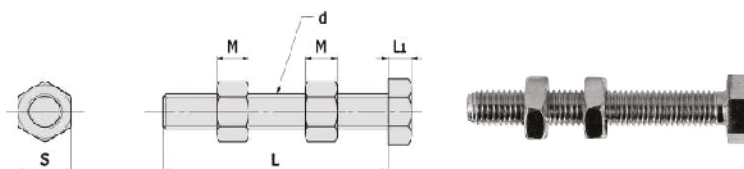


ARTICOLO	L	M	A	B	D	d	S
<b>Filettatura metrica</b> (metric thread)							
CH-SF-05035	35	4.7	10	4	12	M5 - P0.80	8
CH-SF-06050	50	5.2	10	4	12	M6 - P1.00	10
CH-SF-08065	65	6.8	13	5.5	20	M8 - P1.25	13
CH-SF-10085	85	8.4	15	5.5	20	M10 - P1.50	16
CH-SF-38300	78	6.8	11	4.5	16	3/8" - 16	13

## CH-SA

Perno filettato zincato con due dadi

(Zinc plated spindle with two nuts)

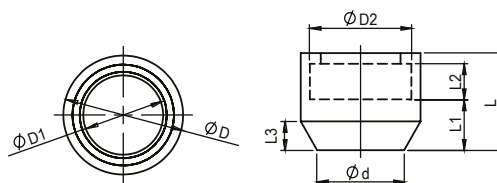


ARTICOLO	L	L1	M	d	S
<b>Filettatura metrica (metric thread)</b>					
CH-SA-041507	15	2.8	3.2	M4 - P0.70	7
CH-SA-042007	20	2.8	3.2	M4 - P0.70	7
CH-SA-042507	25	2.8	3.2	M4 - P0.70	7
CH-SA-044007	40	2.8	3.2	M4 - P0.70	7
CH-SA-051508	15	3.5	4.7	M5 - P0.80	8
CH-SA-053008	30	3.5	4.7	M5 - P0.80	8
CH-SA-064010	40	4	5.2	M6 - P1.00	10
CH-SA-065010	50	4	5.2	M6 - P1.00	10
CH-SA-083012	30	5.3	6.8	M8 - P1.25	13
CH-SA-085012	50	5.3	6.8	M8 - P1.25	13
CH-SA-086512	65	5.3	6.8	M8 - P1.25	13
CH-SA-105015	50	6.4	8.4	M10 - P1.50	16
CH-SA-107515	75	6.4	8.4	M10 - P1.50	16
CH-SA-109015	90	6.4	8.4	M10 - P1.50	16
CH-SA-125017	50	7.5	10.8	M12 - P1.75	18
<b>Filettatura UNC (unc thread)</b>					
CH-SA-08034	3/4"(19)	3	3	5/32"-32	7
CH-SA-10118	1-1/8"(28)	3.1	4	3/16"-24	7.8
CH-SA-14112	1-1/2"(38)	3.8	5.8	1/4"-20	10.8
CH-SA-14134	1-3/4"(45)	3.8	5.8	1/4"-20	10.8
CH-SA-56200	2"(50)	5	6.7	5/16"-18	12.8
CH-SA-56212	2-1/2"(63)	5	6.7	5/16"-18	12.8
CH-SA-38300	3"(76)	5.3	7.8	3/8"-16	14
CH-SA-38400	4"(100)	5.3	7.8	3/8"-16	14
CH-SA-12300	3"(76)	7.3	9.5	1/2"-12	18.7
CH-SA-12412	4-1/2"(114)	7.3	9.5	1/2"-12	18.7
CH-SA-58500	5"(127)	10	11.5	5/8"-11	24

## CH-NC

Tappi in neoprene per viti standard

(Neoprene caps for standard spindles)

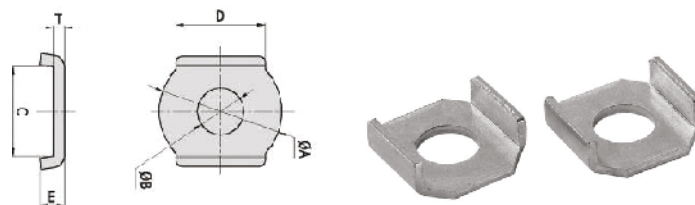


ARTICOLO	VITE	L	L1	L2	L3	D	D1	D2	d
CH-NC-04	M4	8.5	4.2	3	4	11	5.5	8	7
CH-NC-05	M5	10	5	3.5	4	12.5	6.5	9	8
CH-NC-06	M6	12	6	4	4	15	8.5	11.5	10
CH-NC-08	M8	15	7.5	5.5	6	19	11.5	15	13
CH-NC-10	M10	17.5	8.5	7	7	22	15	19.6	15
CH-NC-12	M12	20	9.5	8	7	26	16.5	21.9	19
CH-NC-16	M16	27	14	10	8	33	22	28	24

## CH-FW

Rondelle zincate flangiate

(Zinc plated flange washers)



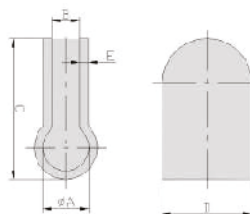
ARTICOLO	A	B	C	D	E	T
CH-FW-080 *	12	4.4	8.4	8.2	3.1	1
CH-FW-100 *	12.6	4.9	9.4	8.4	2.6	1
CH-FW-140 *	14.2	6.3	11.5	7	3.9	1.5
CH-FW-141 *	16.6	6.8	12.6	10.8	3.4	1.5
CH-FW-516 *	21.6	8.2	15.7	15.7	4.5	2
CH-FW-120 *	31	13	24.7	22.9	6.5	3
CH-FW-580 *	36	16	27	23.6	7	3

\* (SS) Disponibile Inox - inox version available

## CH-BR

Clip di tenuta

(Bolt Retainers)



ARTICOLO	A	B	C	D	E
CH-BR-140	8.3	6	32.5	12.7	3
CH-BR-141	6.5	6	22.3	9.5	3
CH-BR-516	8.3	6	32.5	15.9	2.5
CH-BR-380	10.5	8	42.5	20	3
CH-BR-120	13	10	43	23	3
CH-BR-580	16.5	10	50	31.8	3